



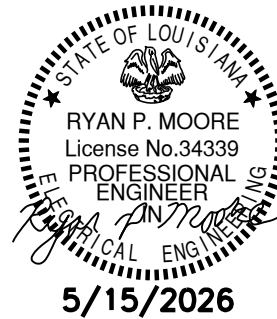
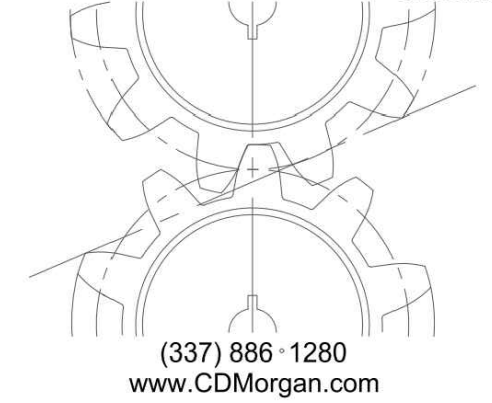
Job Title: _____

**Office of the State
Public Defender
District 8
Office Building**

111 West Main Street
Winnfield, LA 71483

CDMorgan

& ASSOCIATES, INC.
ENGINEERING CONSULTANTS
A PROFESSIONAL ENGINEERING AND ARCHITECTURAL
CORPORATION



Seal: _____

May 15, 2026
Construction Documents

No.	Description	Date

KEY PLAN

DEMO PLANS

Project No.: BLO001-25 Drawn By: GP

E2.0

OSPD

Sheet No.: _____

GENERAL DEMOLITION NOTES:
COORDINATE SCOPE OF ELECTRICAL DEMOLITION WITH ARCHITECTURAL,
MECHANICAL, AND PLUMBING DRAWINGS.

UNLESS OTHERWISE NOTED, REMOVE ALL ELECTRICAL LUMAIRES, EQUIPMENT,
SYSTEMS, DEVICES, OUTLETS, SWITCHES, PULL BOXES, JUNCTION BOXES, ETC.
AS REQUIRED TO COMPLETELY TAKE OUT THE ELECTRICAL ITEMS SHOWN TO BE
REMOVED. DISCONNECT AND REMOVE ALL ELECTRICAL PROVISIONS TO
EQUIPMENT BEING REMOVED. REMOVE ALL WIRING, CONDUIT, RACEWAYS, OUTLET
BOXES, ETC. SUPPORTING OR SERVING THE ITEMS REMOVED.

REMOVE BRANCH CIRCUIT WIRING AND CONDUCTORS BACK TO PANELBOARD OR
TO LAST OUTLET OR JUNCTION BOX THAT WILL REMAIN IN SERVICE. WHERE
COMPLETE CIRCUITS ARE DEMOLISHED, REMOVE WIRING AND RACEWAY BACK TO
THE BRANCH CIRCUIT PANELBOARD. REVISE THE PANELBOARD SCHEDULE TO
INDICATE THAT THE DEMOLISHED CIRCUIT'S BREAKER IS "SPARE".

REMOVE ALL CONDUCTORS, WIRING, AND CONDUIT (WHERE PRESENT) INCLUDING,
BUT NOT LIMITED TO, FIRE ALARM, POWER, VOICE/DATA, SECURITY, NURSE CALL,
INTERCOM, AND PAGING IN DEMOLITION AREA THAT ARE NO LONGER IN USE OR
ALREADY ABANDONED. NO CONDUCTORS OR CABLES SHALL BE ABANDONED IN
PLACE. REMOVE EXISTING WIRING AND CONDUIT BACK TO SOURCE.

CONCEALED CONDUIT THAT CANNOT BE REMOVED DUE TO INACCESSIBILITY MAY
BE ABANDONED. CONDUCTORS SHALL BE REMOVED AND CONDUIT CUT FLUSH
WITH SURFACE

OUTLET BOXES THAT CANNOT BE REMOVED DUE TO FLUSH MOUNTING IN
PARTITIONS NOT BEING REMOVED SHALL BE PROVIDED WITH A BLANK DEVICE
PLATE UNLESS NOTED TO BE FILLED AND FINISHED FLUSH WITH WALL.

MAINTAIN CONTINUITY OF ALL FEEDERS, SYSTEMS CONTROL WIRING,
MISCELLANEOUS AUXILIARY SYSTEMS, ETC. THAT PASS THROUGH THE RENOVATED
SPACE AT ALL TIMES. ANY DAMAGE, DISRUPTION OR DISCONNECTION TO THESE
SYSTEMS SHALL BE REPAIRED IMMEDIATELY, REPLACED AND/OR RE-ROUTED AS
REQUIRED TO MAINTAIN CONTINUITY OF THE SYSTEMS. PROVIDE WIRING AND
RACEWAY NECESSARY TO MAINTAIN CONTINUITY OF ELECTRICAL SERVICE TO
EXISTING OUTLETS THAT REMAIN WHEN POWER TO SUCH OUTLETS IS
INTERRUPTED BECAUSE OF DEMOLITION OF OTHER DEVICES ON THE SAME
CIRCUIT.

SEAL OPENINGS IN FIRE RATED PARTITIONS CREATED BY THE REMOVAL OF
ELECTRICAL EQUIPMENT. MAINTAIN FIRE RATING OF WALL OR PARTITION.

SEE SPECIFICATIONS FOR DISPOSITION OF SALVAGED MATERIALS AND EQUIPMENT.
ALL ITEMS NOTED TO BE REUSED SHALL BE REMOVED FROM THEIR EXISTING
LOCATION, CLEANED, AND INSTALLED AT THEIR NEW LOCATION WITH THE PROPER
CIRCUIT CONNECTIONS AND INSTALLATION SUPPORTS.

COORDINATE WITH EXISTING CONDITIONS AND THESE NOTES AND REMOVE ALL
APPLICABLE SYSTEMS AND COMPONENTS CONFLICTING WITH FINISHED DESIGN
INTENT.

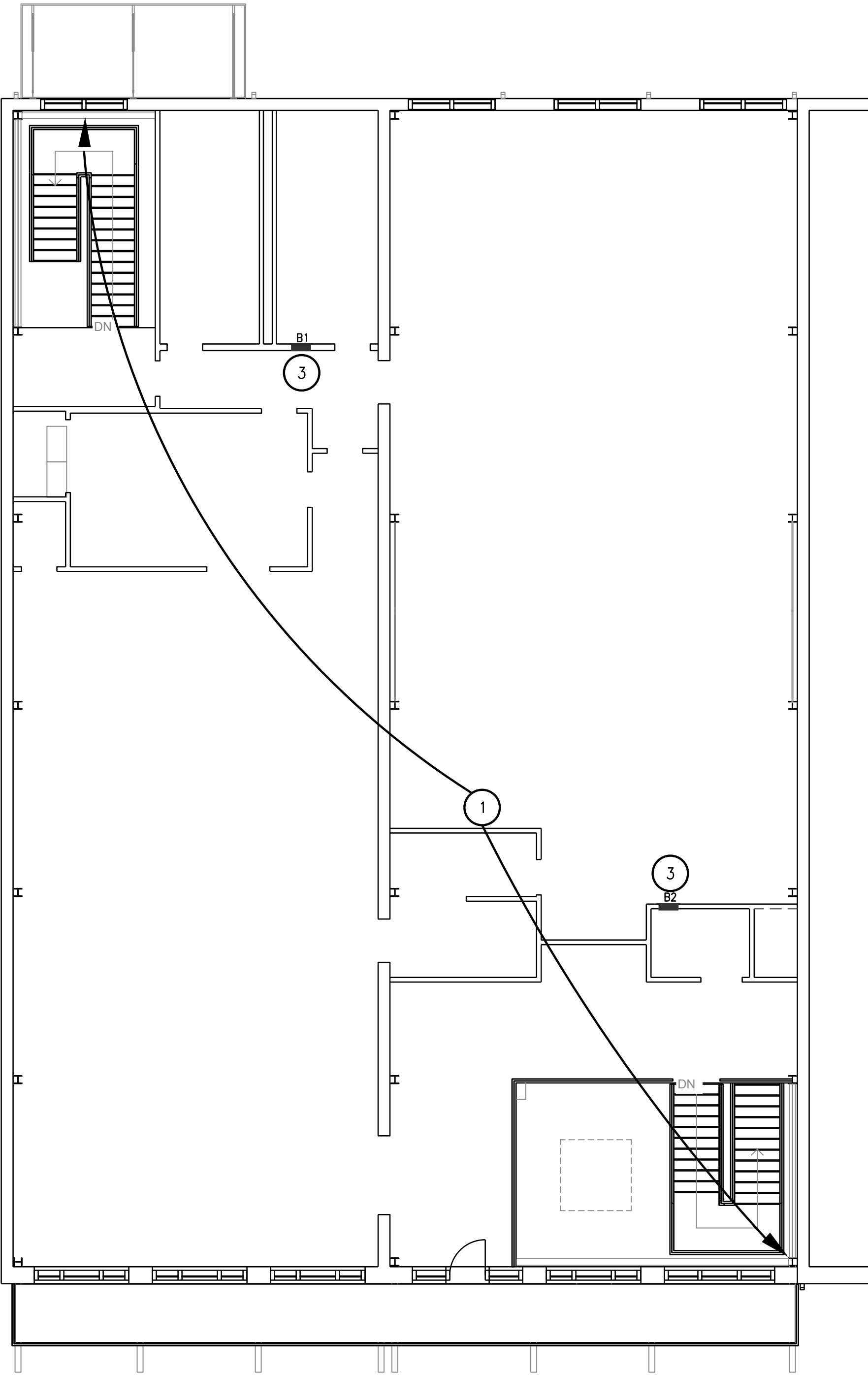
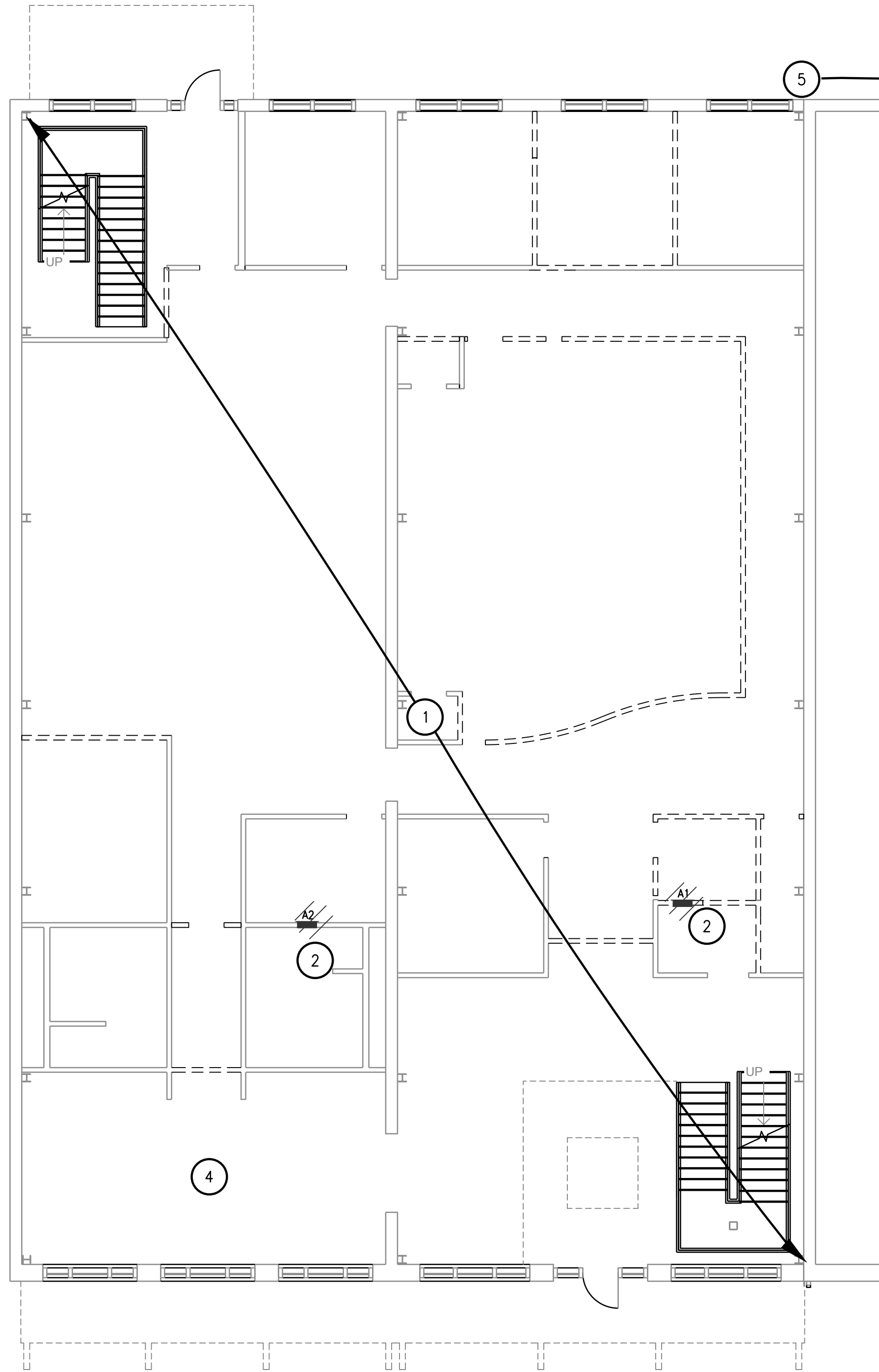
WHERE CIRCUITS ARE REMOVED FROM EXISTING PANELBOARDS LEAVE CIRCUIT
BREAKERS IN PLACE FOR RECONNECTION TO NEW CIRCUITS.

COORDINATE ALL PHASING REQUIREMENTS WITH ARCHITECTURAL DRAWINGS AND
GENERAL CONTRACTOR PRIOR TO START OF CONSTRUCTION.

WHERE POSSIBLE, UTILIZE EXISTING BACKBOXES AND CONDUIT FOR NEW WORK.
FIELD VERIFY EXISTING CONDITIONS.

KEYNOTES

1. COMPLETELY REMOVE EXISTING ELECTRICAL INSTALLATIONS
AS REQUIRED FOR FINISHED DESIGN INTENT.
2. SEE RISER DIAGRAM FOR MORE INFORMATION.
3. PROVIDE NEW DEAD FRONT COVER AND PANEL COVER
WITH DOOR EXISTING PANELBOARD.
4. MAINTAIN EXISTING CONDUIT IN FLOOR TO CENTER OF
ROOM. UTILIZE CONDUIT FOR NEW FLOOR BOX.
5. EXISTING MSB LOCATED AT PLAN EAST BACK CORNER OF
BUILDING. FIELD VERIFY EXISTING CONDITIONS.



FIRST FLOOR ELECTRICAL DEMO PLAN

SCALE: 1/8"=1'-0"

SECOND FLOOR ELECTRICAL DEMO PLAN

SCALE: 1/8"=1'-0"